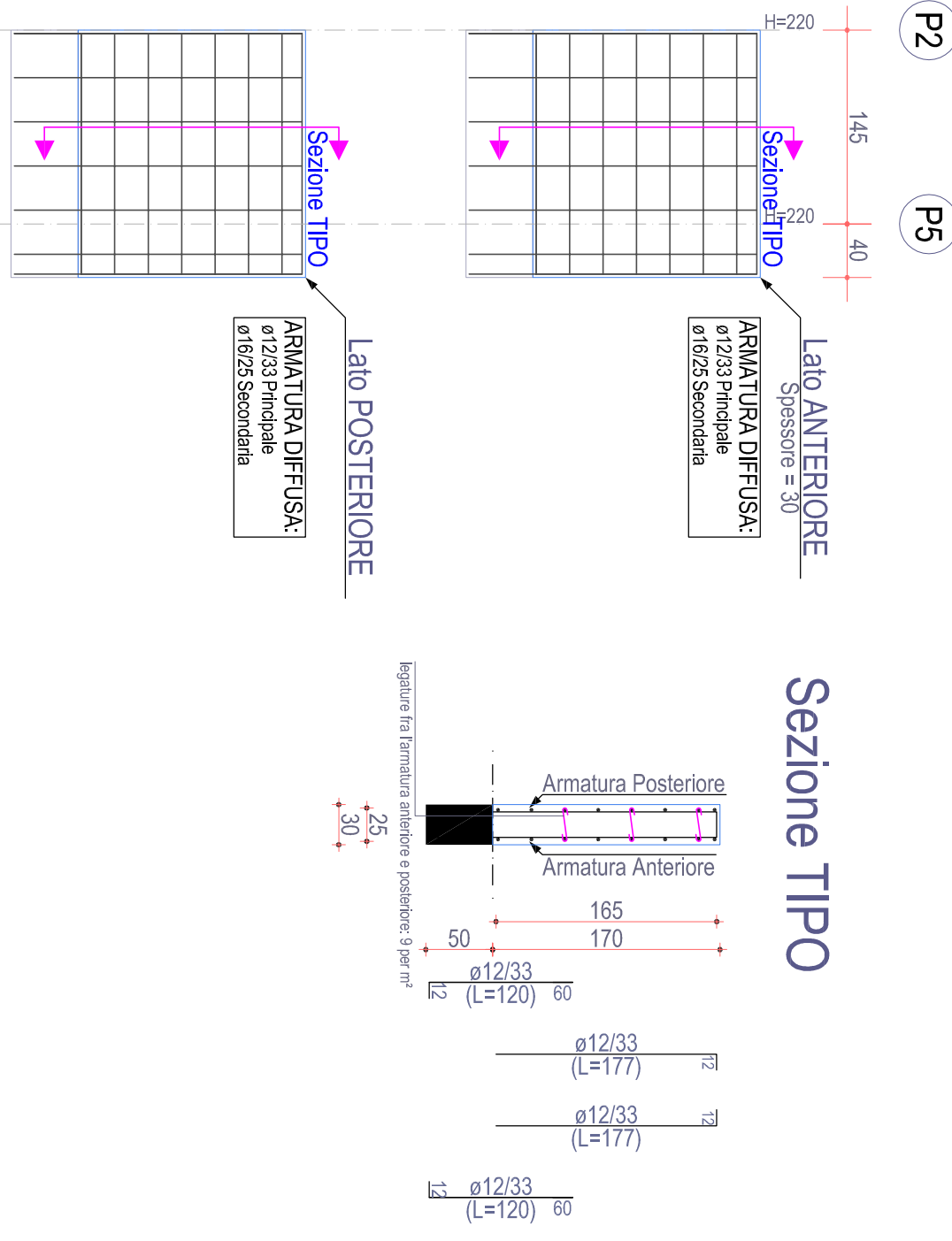


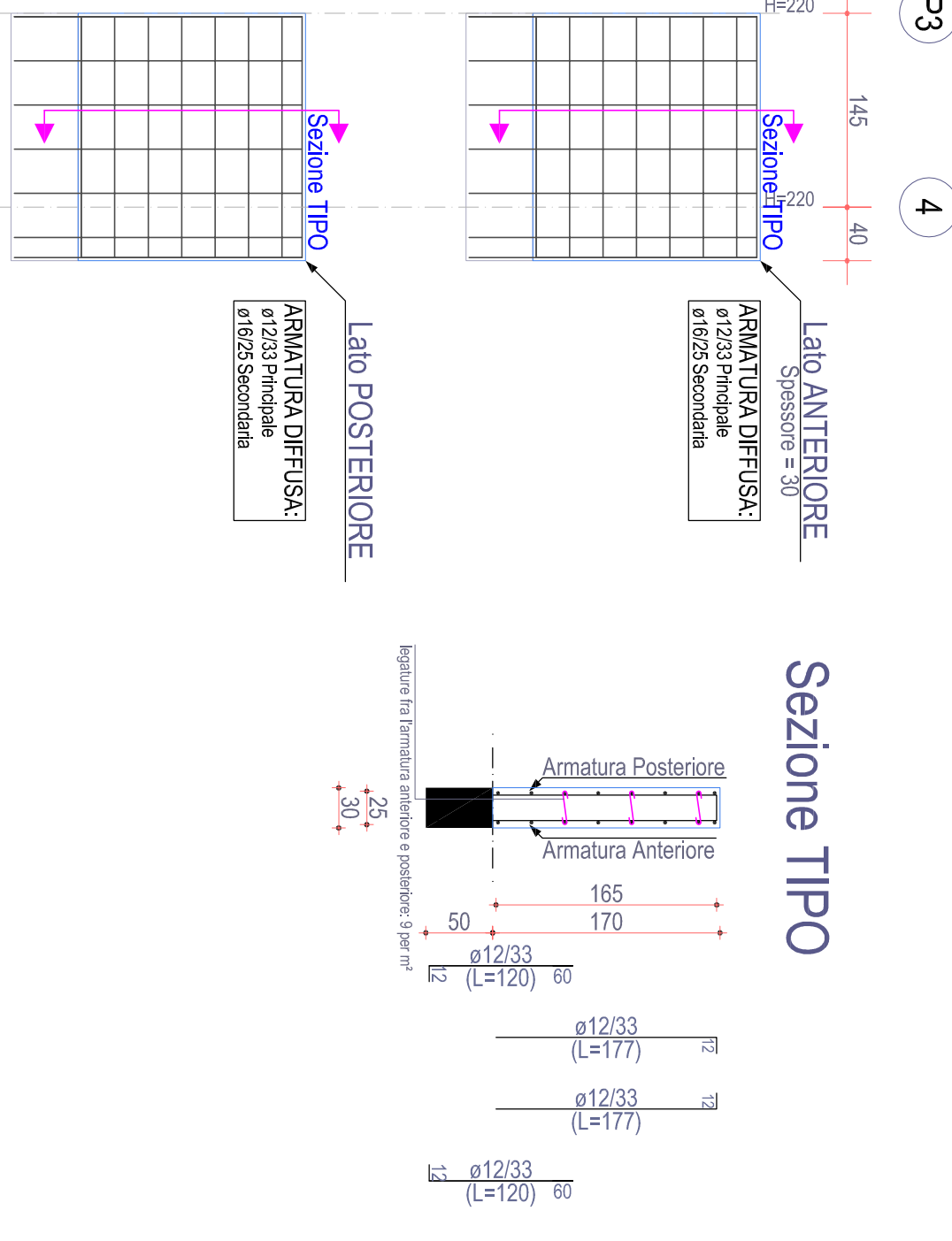
Il progettista Arch. Roberto Galati Via S. Maria della Pace, 156 71121 Foggia - telefono 0884/590000 fax 0884/590001 e-mail: roberto.galati@arcanet.it	Il responsabile tecnico del procedimento e il verificatore statico (Resp. Ufficio Contratti ARCA Capitanata) Ing. Francesco Sisti Il dirigente dell'Area e autorizzante Ing. Vincenzo DE DIVINIS
--	---

PIANTA	TIPOLOGIA	ESECUTIVI STRUTTURE BLOCCO 7° STATO ATTUALE PARETI PIANO NERVATURE	SCALA 1:500 LUNA
ACCOMPAGNAMENTI	L. IMPRESA	L. DIRETTORE DEI LAVORI	
RF			

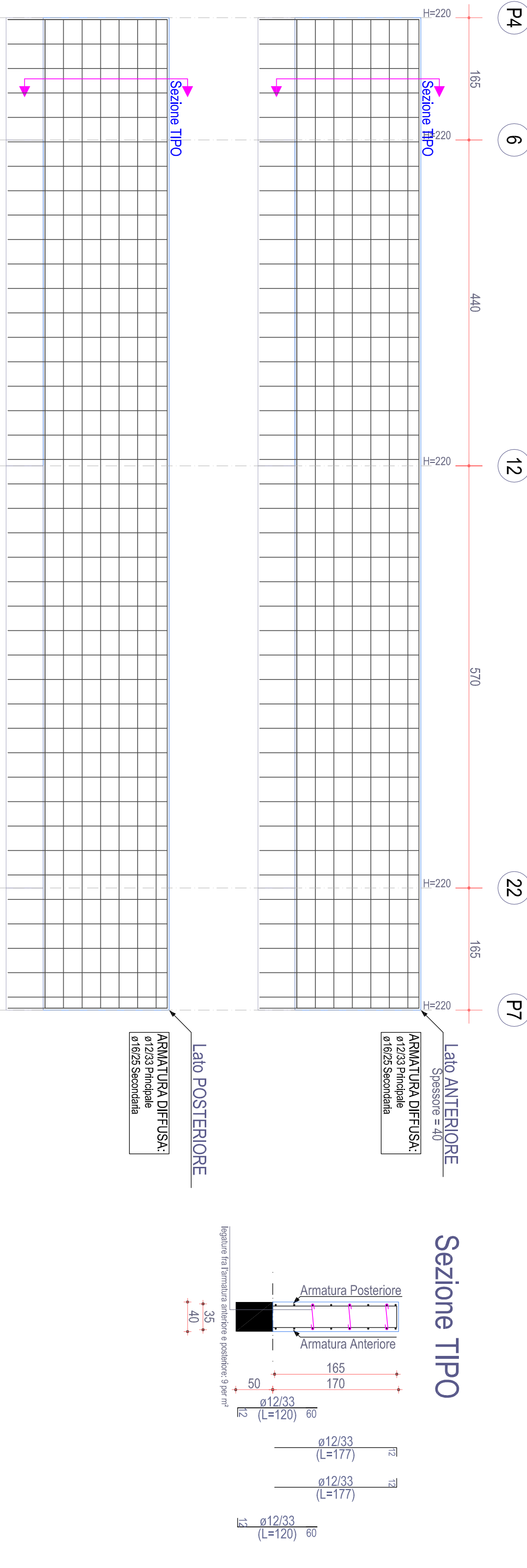
PARETE P2-P5 (esistente)
Piano Nerviatura



PARETE P3-P4 (esistente)
Piano Nerviatura



PARETE P4-6-12-22-P7 (esistente)
Piano Nerviatura

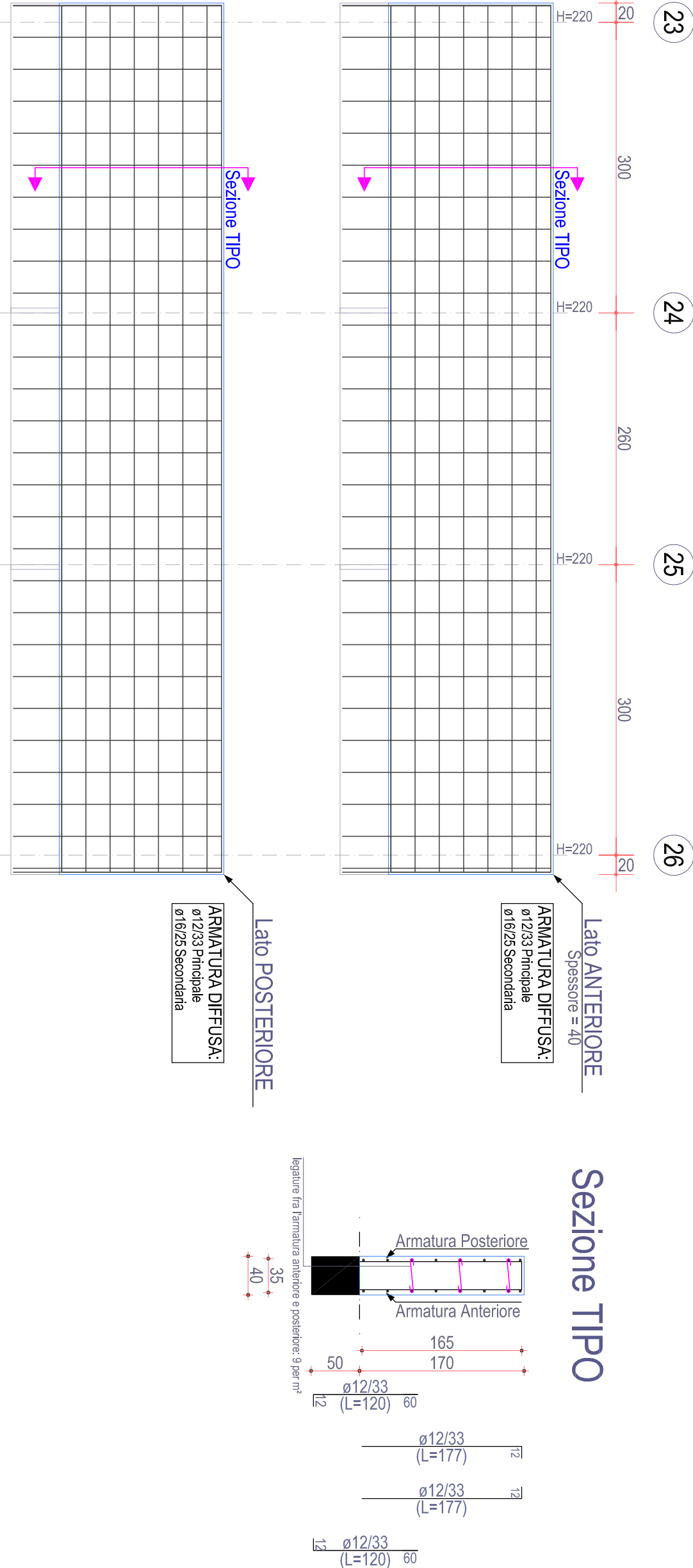


Scala: 1/50

Scala: 1/50

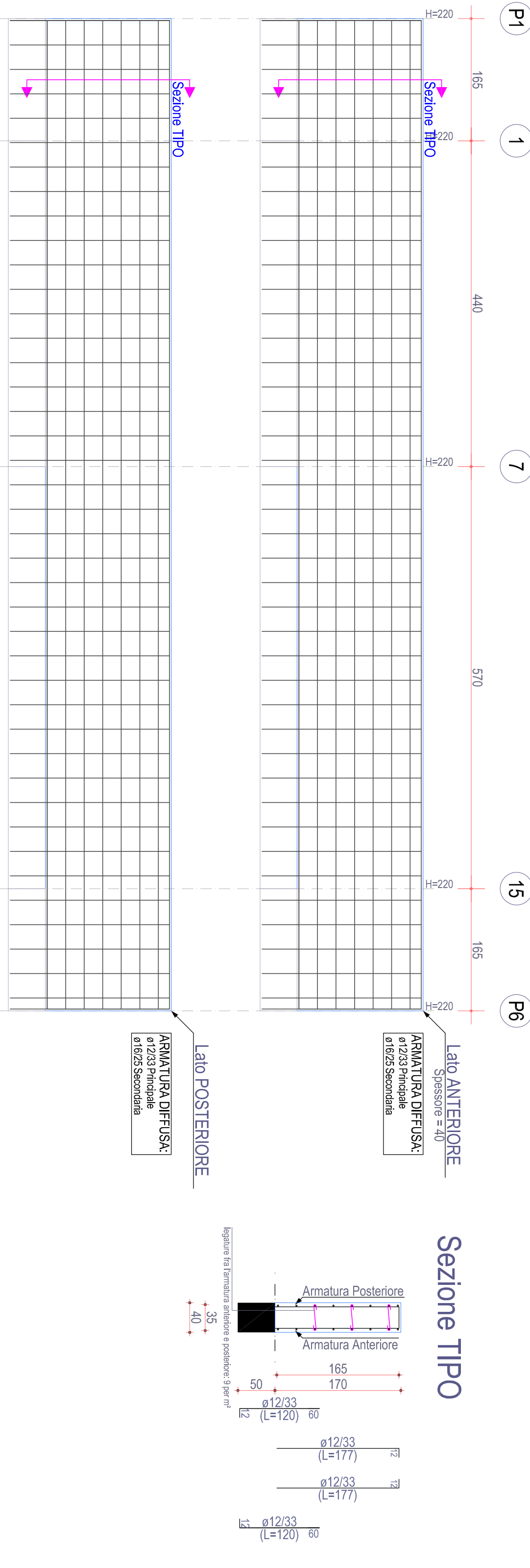
Scala: 1/50

PARETE 23-24-25-26 (esistente)
Piano Nerviatura



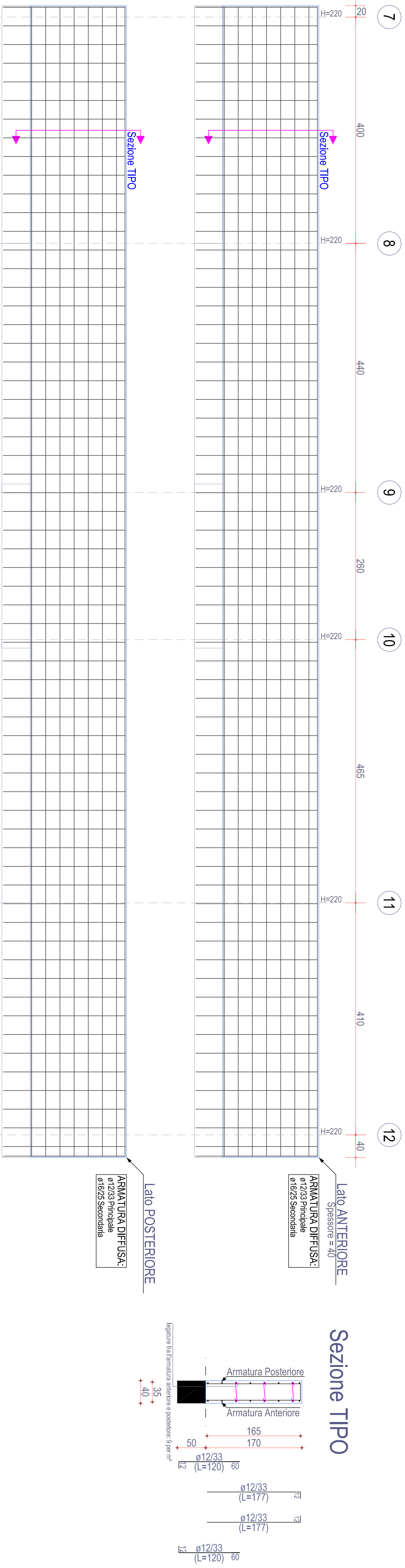
Scala: 1/50

PARETE P1-1-7-15-P6 (esistente)
Piano Nerviatura



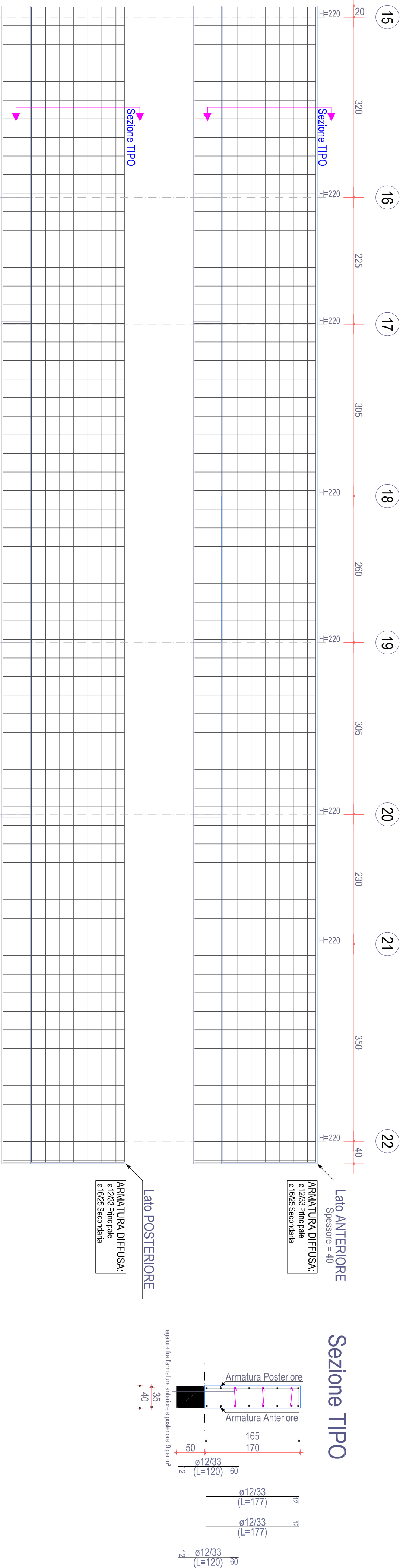
Scala: 1/50

PARETE 7-8-9-10-11-12 (esistente)
Piano Nerviatura



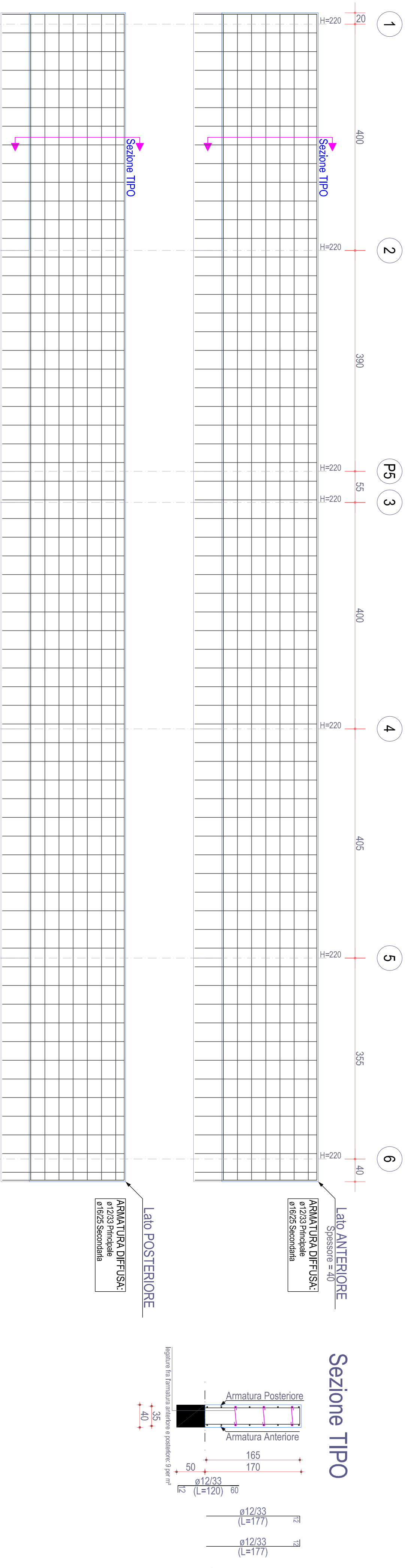
Scala: 1/50

PARETE 15-16-17-18-19-20-21-22 (esistente)
Piano Nerviatura



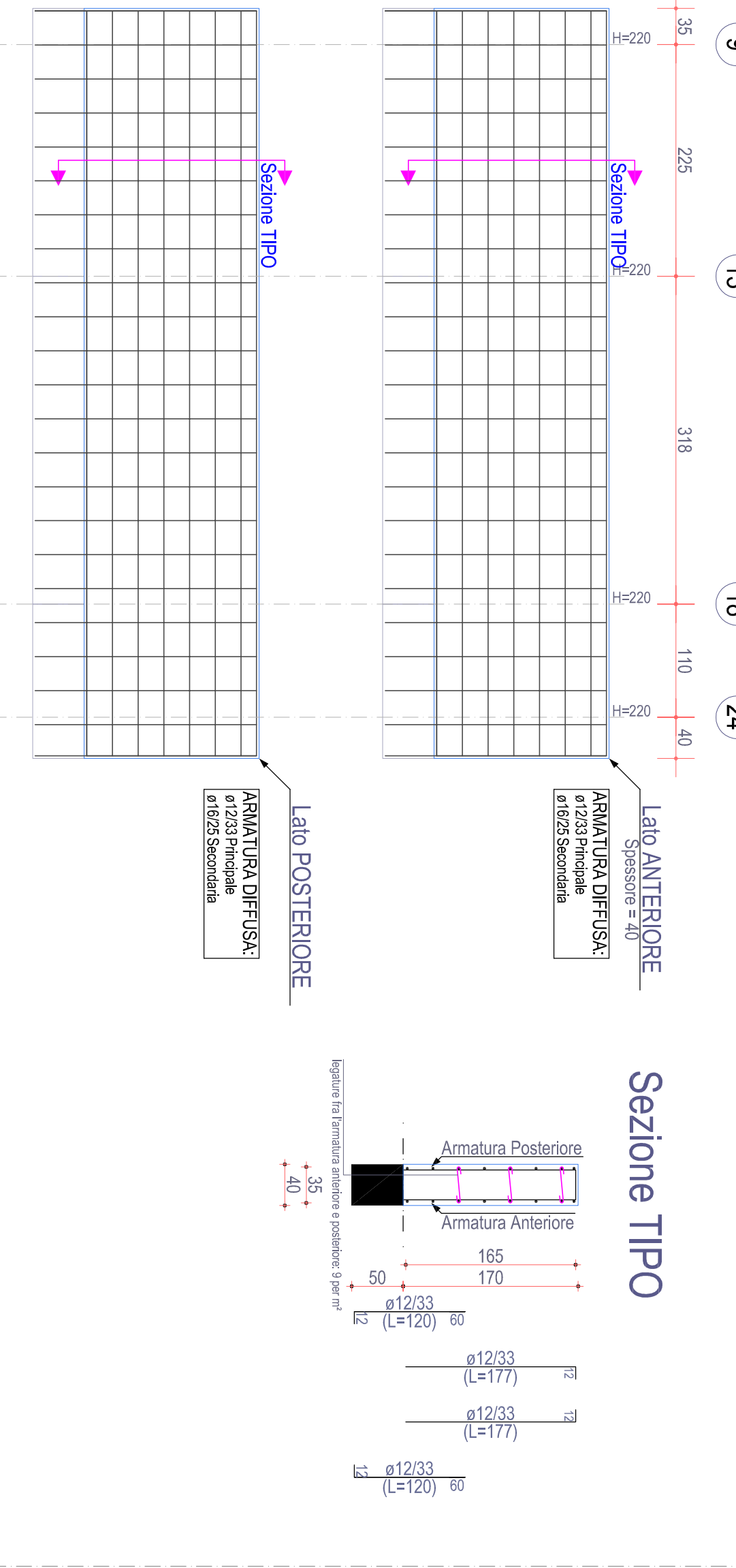
Scala: 1/50

PARETE 1-2-P5-3-4-5-6 (esistente)
Piano Nerviatura



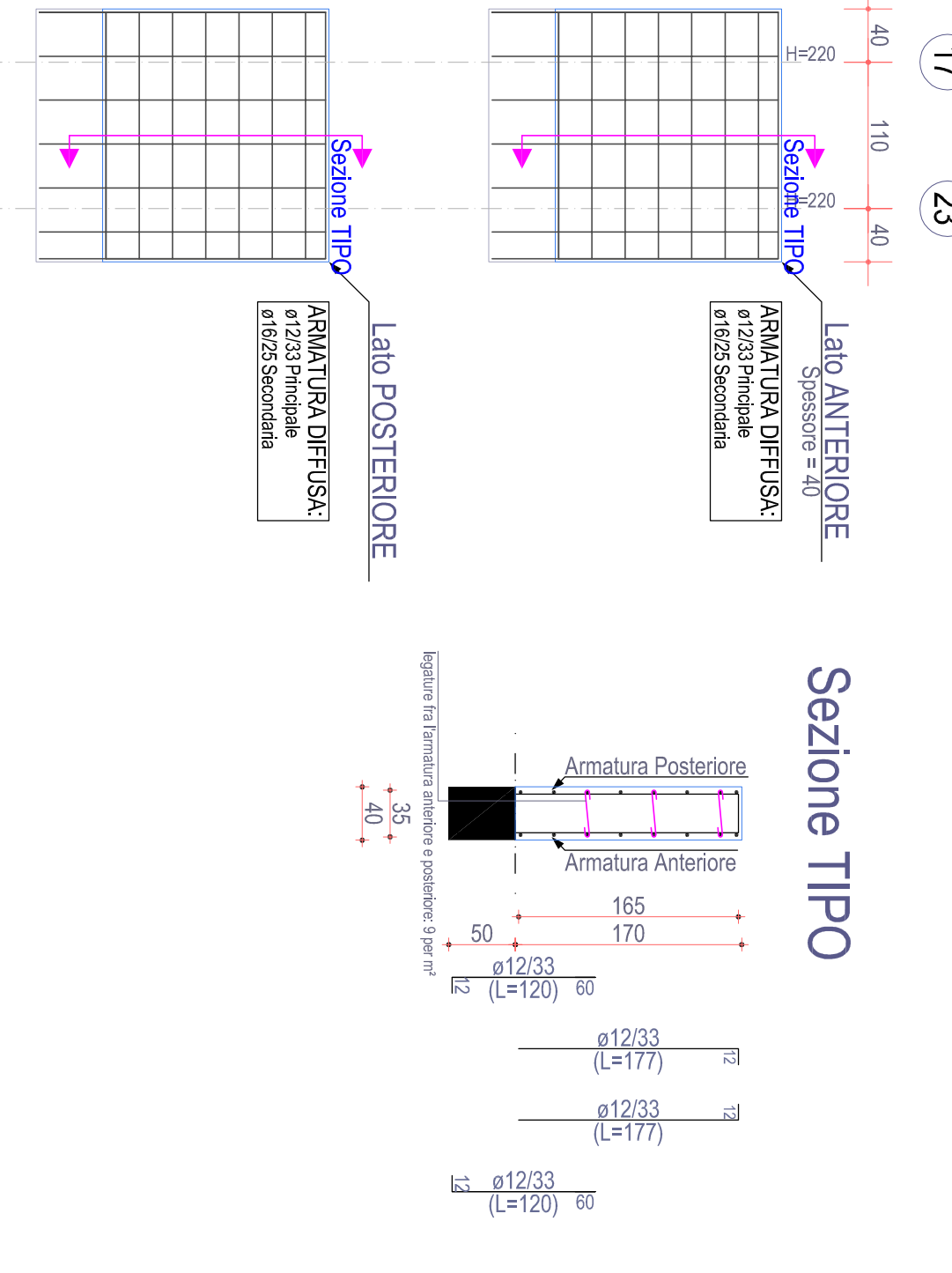
Scala: 1/50

PARETE 9-13-18-24 (esistente)
Piano Nerviatura



Scala: 1/50

PARETE 20-26 (esistente)
Piano Nerviatura



Scala: 1/50